

# Unveiling the Exquisite Beauty of Dante Gabriel Rossetti's Masterpieces: A Journey through Twelve of His Finest Art Works

Dante Gabriel Rossetti, a pivotal figure in the Pre-Raphaelite Brotherhood, was a visionary artist whose captivating paintings and poetry left an indelible mark on the art world. His works, characterized by their exquisite beauty, meticulous attention to detail, and profound symbolism, have captivated generations of viewers.



## The House of Life (Illustrated): With twelve of Rossetti's finest art works by Karen Dolby

★★★★★ 5 out of 5

Language : English  
File size : 3080 KB  
Text-to-Speech : Enabled  
Screen Reader : Supported  
Enhanced typesetting : Enabled  
Print length : 192 pages  
Lending : Enabled



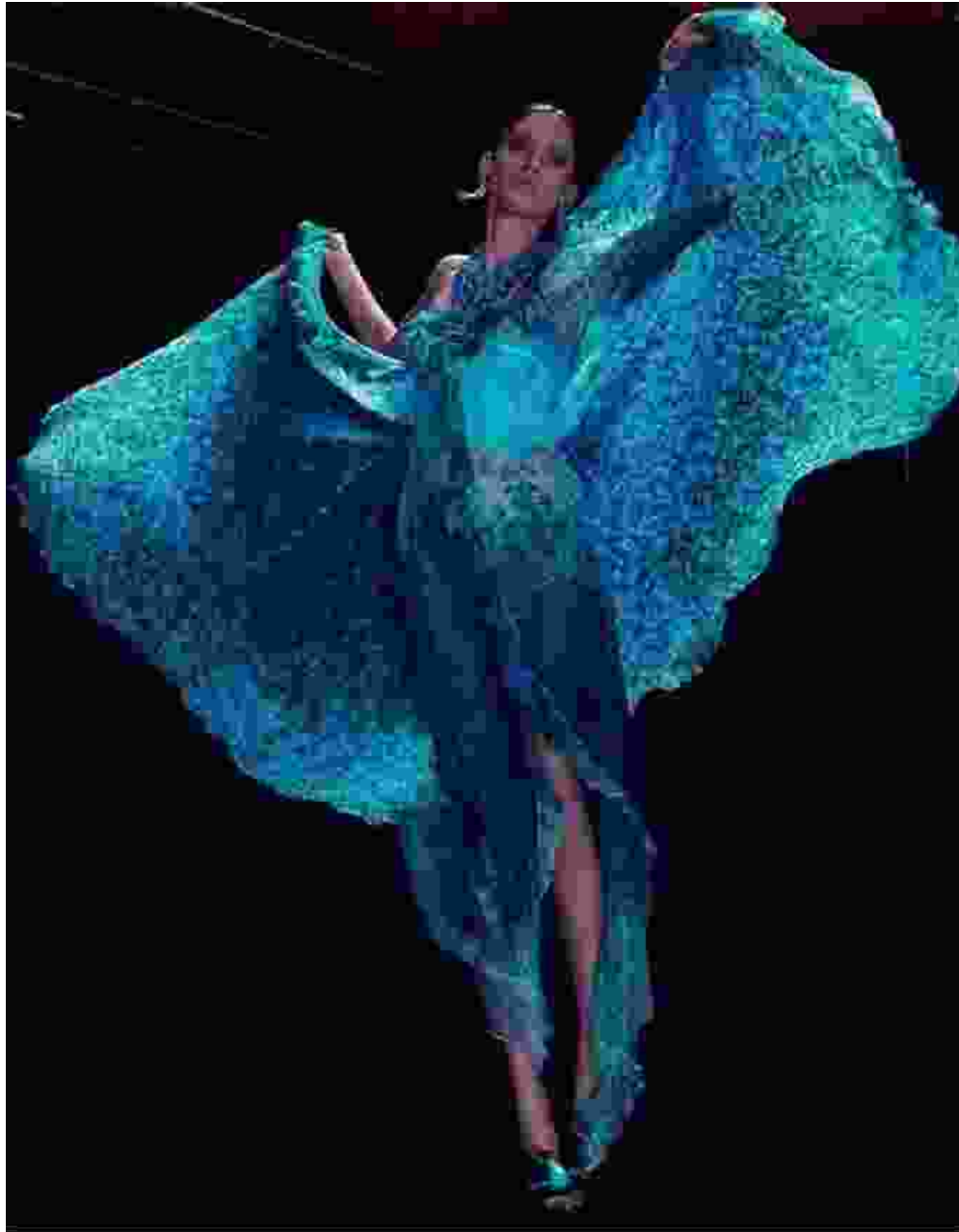
This article embarks on a captivating journey through twelve of Rossetti's most celebrated masterpieces, unraveling the secrets behind their enigmatic symbolism, emotional depth, and enduring legacy.

## 1. The Girlhood of Mary Virgin (1849)



This enchanting painting depicts a young Mary, seated in a tranquil garden, surrounded by doves and lilies. Rossetti's meticulous attention to detail is evident in the intricate embroidery on Mary's gown and the vibrant colors of the flowers. The peacefulness of the scene conveys a sense of Mary's purity and innocence, while the book she holds alludes to her future role as the mother of Christ.

## **2. The Blessed Damozel (1875-1881)**



One of Rossetti's most iconic works, *The Blessed Damozel* portrays a beautiful maiden floating in the heavens, her gaze fixed upon her beloved on Earth. The ethereal beauty of the maiden, her flowing gown, and the intricate golden halo above her head create a sense of otherworldly longing and celestial love.

### **3. Beata Beatrix (1864-1870)**



Inspired by Dante's Divine Comedy, Beata Beatrix portrays Beatrice Portinari, the poet's muse, as a saintly figure. The painting captures the beauty and spirituality of Beatrice, with her serene expression, halo, and the book representing Dante's poetry. Rossetti's use of rich colors and intricate details creates a mesmerizing and evocative image.

#### **4. Lady Lilith (1866-1868)**



Lady Lilith presents a captivating portrayal of the mythical figure Lilith, Adam's first wife. Rossetti depicts Lilith with long, flowing hair, her body adorned with jewels and a serpent wrapped around her neck. The painting exudes an air of mystery and allure, capturing the enigmatic and seductive nature of Lilith.

## **5. Proserpine (1874-1882)**



Inspired by the Roman myth, Proserpine depicts the goddess abducted by Pluto and forced to remain in the underworld for half of the year. Rossetti portrays Proserpine as a beautiful and mysterious figure, her expression conveying both longing and resignation. The pomegranate in her hand symbolizes her connection to both the living and the underworld.

## **6. Astarte Syriaca (1877)**





Astarte Syriaca presents a striking portrait of Astarte, the ancient goddess of love and war. Rossetti depicts the goddess with a crescent moon above her head, a symbol of her lunar aspect, and a serpent entwined around her body, representing her connection with the underworld. The rich colors and intricate details create a sense of mystery and allure.

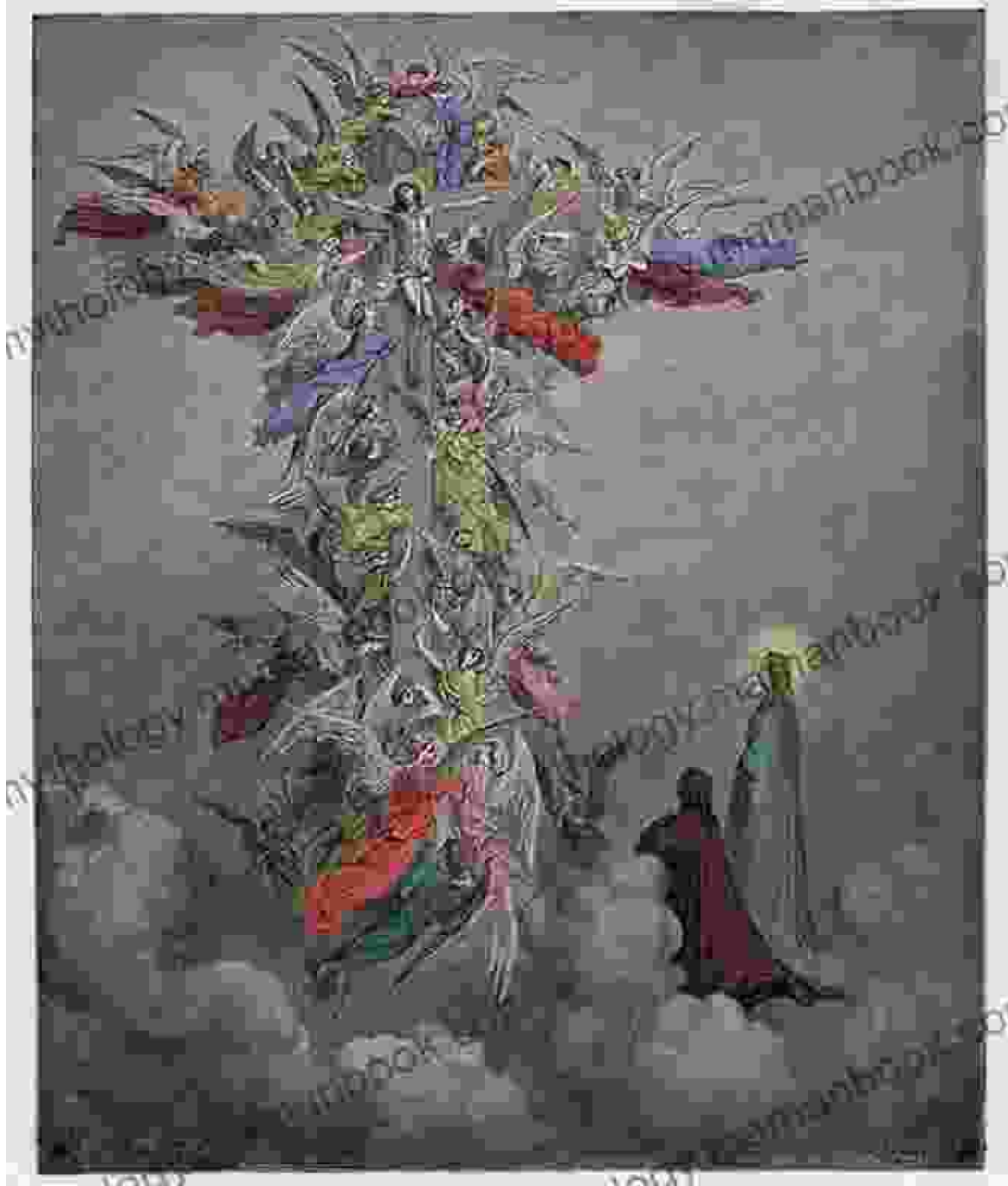
## **7. La Donna della Finestra (1879)**



La Donna della Finestra, meaning "The Lady at the Window," portrays a beautiful woman gazing out of a window, her expression lost in contemplation. Rossetti's focus on the woman's introspective gaze and the intricate details of her surroundings creates a sense of intimacy and mystery. The painting invites viewers to speculate on the woman's thoughts and emotions.

## **8. Dante's Dream at the Time of the Death of Beatrice (1856)**





Dante's Dream depicts a scene from Dante Alighieri's Divine Comedy, where Dante witnesses the death of his beloved Beatrice. Rossetti portrays Dante surrounded by angels, his expression grief-stricken as he gazes upon Beatrice's lifeless body. The painting is a powerful and moving tribute to the love and loss that permeates the Divine Comedy.

### **9. Paolo and Francesca da Rimini (1855)**

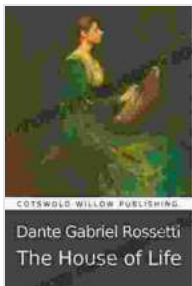


Inspired by Dante's *Inferno*, Paolo and Francesca depicts the tragic love story of Paolo and Francesca, who are condemned to eternal torment for their forbidden love. Rossetti captures the moment when Francesca and Paolo embrace, while Beatrice, Dante's muse, looks on from the left. The painting exudes a sense of longing, tragedy, and the consequences of illicit love.

## 10. The Salutation of Beatrice (1859)



The Salutation of Beatrice depicts a scene from Dante's Purgatorio, where Beatrice greets Dante after his journey through



### The House of Life (Illustrated): With twelve of Rossetti's finest art works by Karen Dolby

★★★★★ 5 out of 5

Language : English  
File size : 3080 KB  
Text-to-Speech : Enabled  
Screen Reader : Supported  
Enhanced typesetting : Enabled  
Print length : 192 pages  
Lending : Enabled

FREE

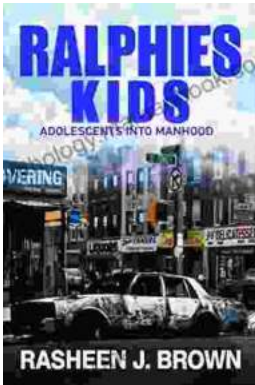
DOWNLOAD E-BOOK





## **Death's Second Chance: The Unbelievable Story of Cris Yeager**

On July 29, 2008, Cris Yeager was pronounced dead. But just minutes later, he was revived by paramedics. He had spent more than 20 minutes without a pulse...



## **From Ralphie Kids to Adolescents: The Journey to Manhood**

The transition from childhood to adolescence is a transformative period in a boy's life. It is a time of rapid physical, emotional, and mental changes that...